

# "DANE" Multi-Jet Water Meters

## Cold & Hot Water Versions

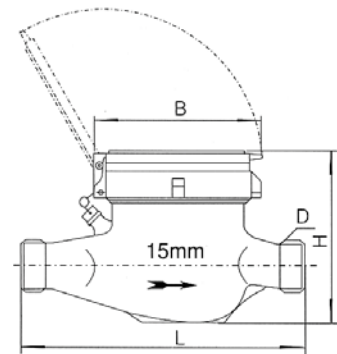


### Application:

"DANE" Multi-Jet meters are suitable for measuring the flow of clean water through pressure systems in domestic, industrial and commercial applications where a high degree of accuracy is required.

### Features:

- Removable element for maintenance,
- Sealed register,
- Long term clear reading display,
- Magnetic transmission,
- Low resistance,
- Reliable action,
- Low pressure loss,
- Long working life,
- Heavy duty polyester coating over cast iron,
- Supplied with brass union couplings – male BSP,
- Reed switch pulse output is optional,



### Operating Conditions:

- Water Temperature: Cold water version to 40 degrees C,
- Hot water version to 90 degrees C,
- Operating pressure to 16 Bar (1,600 kPa) includes pressure surges,
- May be installed horizontally or vertically with the dial uppermost.

### Maximum Permissible Error:

- In the lower zone from  $Q_{min}$  inclusive up to but excluding  $Q_t$  is +/- 5%
- In the upper zone from  $Q_t$  inclusive up to and including  $Q_s$ : cold water meter +/- 2%, hot water meter +/- 3%.

## Notes:

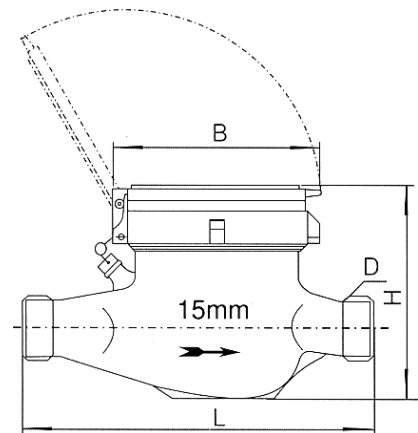
- Meters are factory tested to be class "B" when installed horizontally, but class "A" when installed vertically.
- Technical data conforms to International Standard ISO4064

## Main Technical Data:

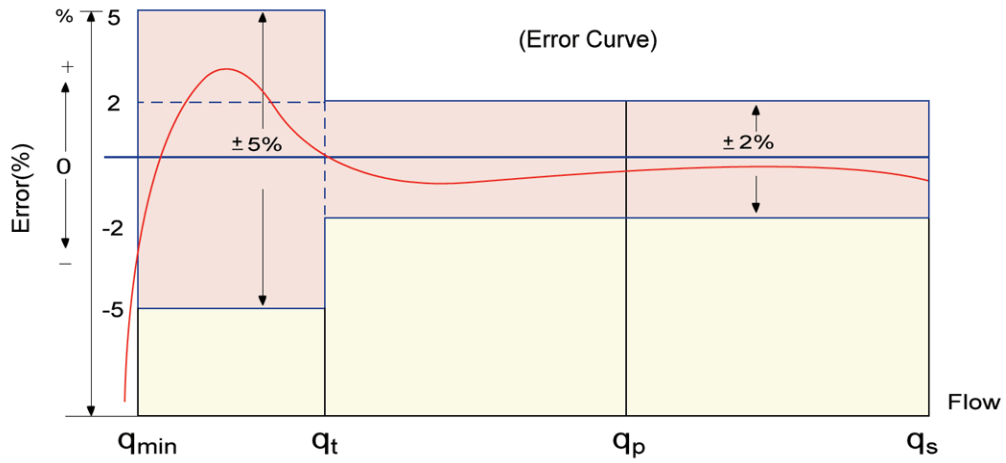
Model	Size (mm)	Class	q <sub>s</sub>	q <sub>b</sub>	q <sub>t</sub>	q <sub>min</sub>	Min. Reading	Max. Reading
			Max. Flow	Nominal Flow	Transitional Flow	Min. Flow		
			m <sup>3</sup> /h		L/h		m <sup>3</sup>	
DANE-15-MJ-AF	15	A	3	1.5	150	60	0.0001	99999
		B			120	30		
DANE-20-MJ-AF	20	A	5	2.5	250	100	0.0001	99999
		B			200	50		
DANE-25-MJ-AF	25	A	7	3.5	350	140	0.0001	99999
		B			280	70		
DANE-32-MJ-AF	32	A	12	6.0	600	240	0.0001	99999
		B			480	120		
DANE-40-MJ-AF	40	A	20	10	1000	400	0.001	99999
		B			800	200		
DANE-50-MJ-AF	50	A	30	15	1500	600	0.001	99999
		B			1200	300		

## Dimensions & Weights:

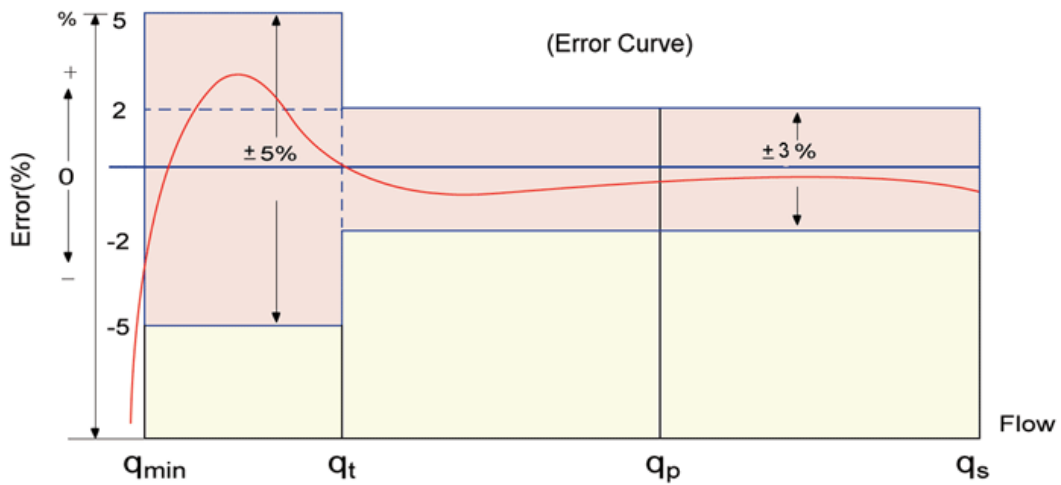
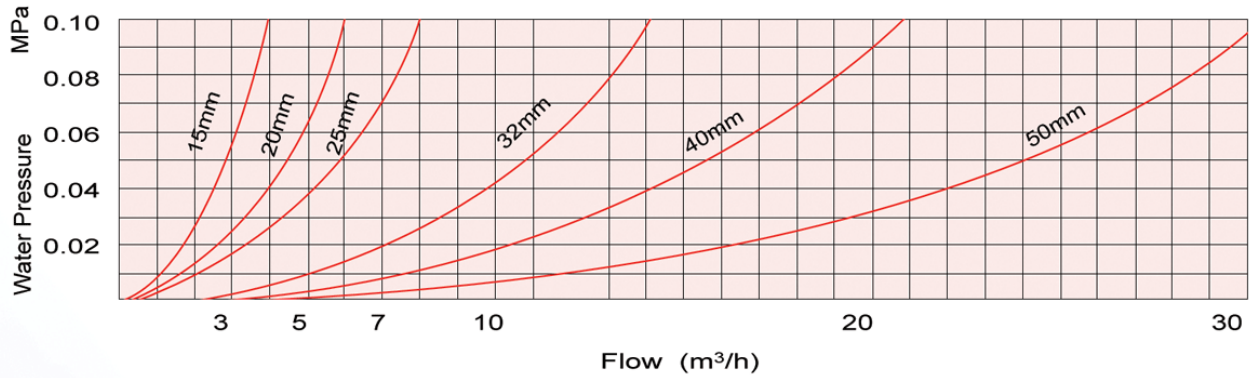
Type	Size	Length	Width	Height	Male Union Thread D	Weight (kg)
	mm					
DANE-15-MJ	15	165	99	104	15mm Male	1.5
DANE-20-MJ	20	190/195	99	106	20mm Male	1.7
DANE-25-MJ	25	260/225	103	114	25mm Male	2.6/2.4
DANE-32-MJ	32	260/230	104	117	32mm Male	2.8/2.7
DANE-40-MJ	40	300/245	124	147	40mm Male	5.1/4.8
DANE-50-MJ	50	300/280	125	172	50mm Male	8.5/8.2



### Flow & Error Curve (Cold water meters)



### Pressure loss curve:



### DANE-XX-MJ-AC Hot water meter – Error Curve



## “DANE” Multi-Jet meter with reed switch pulse output.

### Applications & Features:

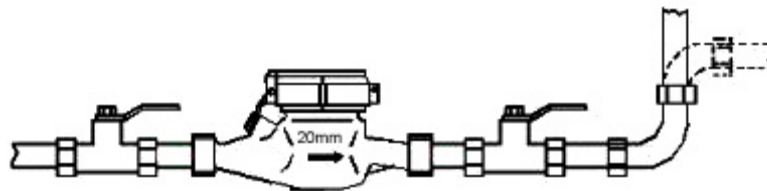
- Suitable for remote logging and reading systems,
- Pulse outputs of 1 pulse per litre, 1 pulse per 10 litres and, 1 pulse per 100 litres are available,

### Reed Switch Electrical Data:

- Switch voltage: 24VAC/ DC
- Switch current: 0.01A max

### Installation & Meter Selection:

- The size of the meter is determined according to the flow rate,
- The meter should be installed horizontally with the counter uppermost, the direction of flow arrow on the meter body must coincide with the direction of the water flow,
- The meter location must be protected from magnetic fields, direct sunlight, extremes in temperature,
- Ensure that all pipework is flushed clean prior to installing a new meter,
- Ensure that the pipework is arranged so that the meter always remains full of water,
- Ensure that the union male tail supplied with the meter is always used in the installation,
- All meters must be installed with isolation valve before and after the meter,
- Meters must be filled with water slowly to avoid damage to the internal components



Manufacturer: Irrigation Warehouse Group Pty Ltd, 404 Grey St, Glen Innes, NSW 2370 Ph 02 6732 6333

Fax 02 6732 6311 Web Site: [www.watermeters.com.au](http://www.watermeters.com.au) Email: [rod@watermeters.com.au](mailto:rod@watermeters.com.au)