

mod. **GSD8**
single jet - super dry



iso 9001:2000
cert. n. 1798



cee 75/33
iso 4064



Mod. GSD8

Getto unico, quadrante asciutto, lettura diretta su 8 rulli numeratori. Realizzato nelle versioni per acqua fredda (30° C) e calda (90° C) nei calibri \varnothing 13 e 20 mm (1/2" e 3/4"). Quadrante orientabile su 360°. Esclusi rischi di corrosione e sedimentazione. Garanzia di lunga durata ed elevata precisione.

Mod. GSD8

Single jet, dry dial, direct reading on 8 numerical rolls. Produced in the versions cold water (30° c) and hot water (90° C) in the diameters 13 and 20 mm (1/2"- 3/4"). Dial can rotate 360°. Risks of corrosion and sedimentation are excluded. Guaranteed long durability and elevated precision.

Mod. GSD8

Chorro único, cuadro seco, lectura directa sobre 8 rodillos numerados. Construido en las versiones para agua fría (30° C) y caliente (90° C) en los calibres \varnothing 13 y 20 mm (1/2" y 3/4"). Cuadro orientable a 360°. Excluidos los riesgos de corrosión y sedimentación. Garantía de larga duración y elevada precisión.

Mod. GSD8

Jet unique, cadran sec à lecture directe sur 8 rouleaux numériques, disponible en version eau froide (30°) ou eau chaude (90°C) eten 2 calibres 13 ou 20 mm (1/2" ou 3/4"), cadran orientable à 360°, exclus tous problèmes de corrosion et d'incrustation, fiabilité dans le temps et précision élevée.

Mod. GSD8

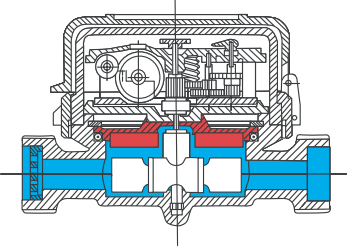
Einzelwasserstrahl, trockenes Ziffernblatt, Direktablesung auf 8 Zahlrollen. Produziert in den Versionen Kaltwasser (30 Grad) und Warmwasser (90 Grad) in den Durchmesser 13 und 20 mm (1/2 Zoll-3/4 Zoll). Um 360 Grad schwenkbares Ziffernblatt. Die Risiken von Rost und Ablagerungen sind ausgeschlossen. Garantiert lange Haltbarkeit und erhöhte Genauigkeit.

Мод. GSD8

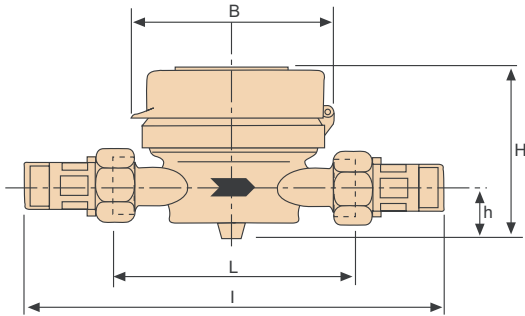
Однотруйный, сухоходный, крильчатый счётчик холодной (30°C) и горячей (90°C) воды, прямой считывание на 8 ролики. С диаметром условного прохода 13 или 20мм (1/2"- 3/4"). Вращаемый на 360° циферблат. Гарантия долговечности и высокой точности. Исключены риски коррозии и осаждения.

Caratteristiche tecniche - Technical features

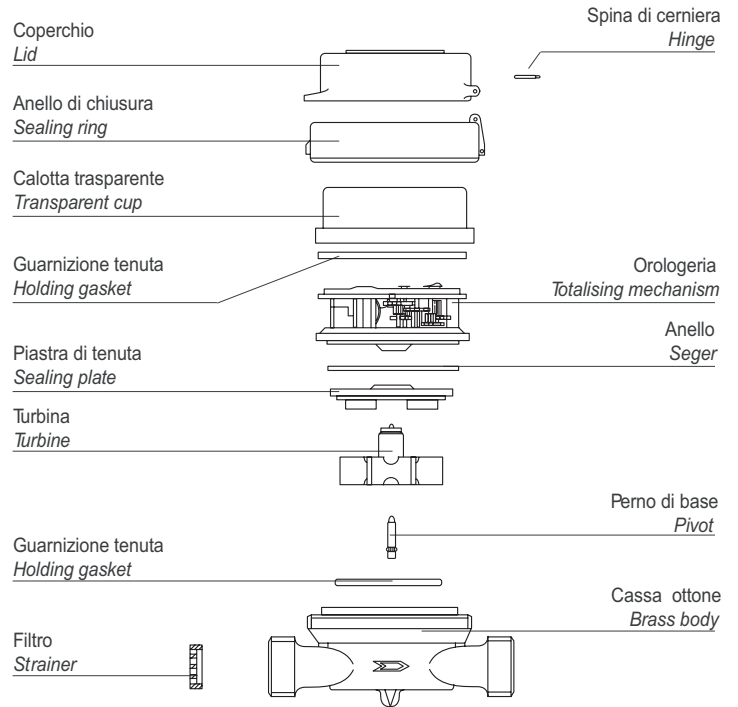
Calibro Size	DN	mm in	13 (1/2")	20 (3/4")
Portata massima Max flow rate	Qmax	m ³ /h	3	5
Portata nominale Nominal flow rate	Qn	m ³ /h	1,5	2,5
Portata di transizione Transitional flow rate	Qt ±2%	l/h	120	200
Portata minima Min flow rate	Qmin ±5%	l/h	30	50
Letture minima Min reading		l	0,05	0,05
Letture massima Max reading		m ³	100.000	100.000
Pressione max di esercizio Max working pressure		bar	16	16

Classe B-H/A-V Class B-H/A-V	
Acqua fredda 0° - 30°C Cold water 0° - 30°C	
Acqua calda 30° - 90°C Hot water 30° - 90°C	
Trascinamento magnetico Magnetic transmission	
Quadrante orientabile su 360° 360° revolving dial	
Piastra di tenuta antigelo su richiesta Antifrost sealing plate on request	
Orologeria superiore a tenuta Water proof mechanism	
Letture in galloni imperiali su richiesta Reading in imperial gallons on request	
Coperchio su richiesta Lid on request	
Dispositivo antimagnetico su richiesta Anti magnetic protection device on request	

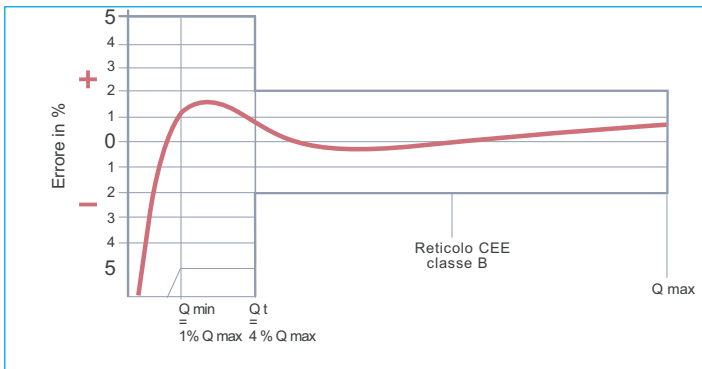
Dimensioni e pesi - Dimensions and weights



Calibro Size	mm in	13 1/2"	13 1/2"	13 7/8"-3/4"	20 3/4"	
L	mm	80	110	115	130	
l	mm	160	190	195	228	
H	mm	73	73	73	73	
h	mm	18	18	18	18	
B	mm	85	85	85	85	
Pesi Weights	con raccordi with unions	Kg	0,60	0,65	0,70	0,85
	senza raccordi without unions	Kg	0,45	0,50	0,55	0,60



Curva tipica degli errori dei contatori a turbina Typical error curve of turbine meters



Curva delle perdite di carico dei contatori ø 13 e 20 mm Loss of head curve of ø 13 and 20 mm water meters

